



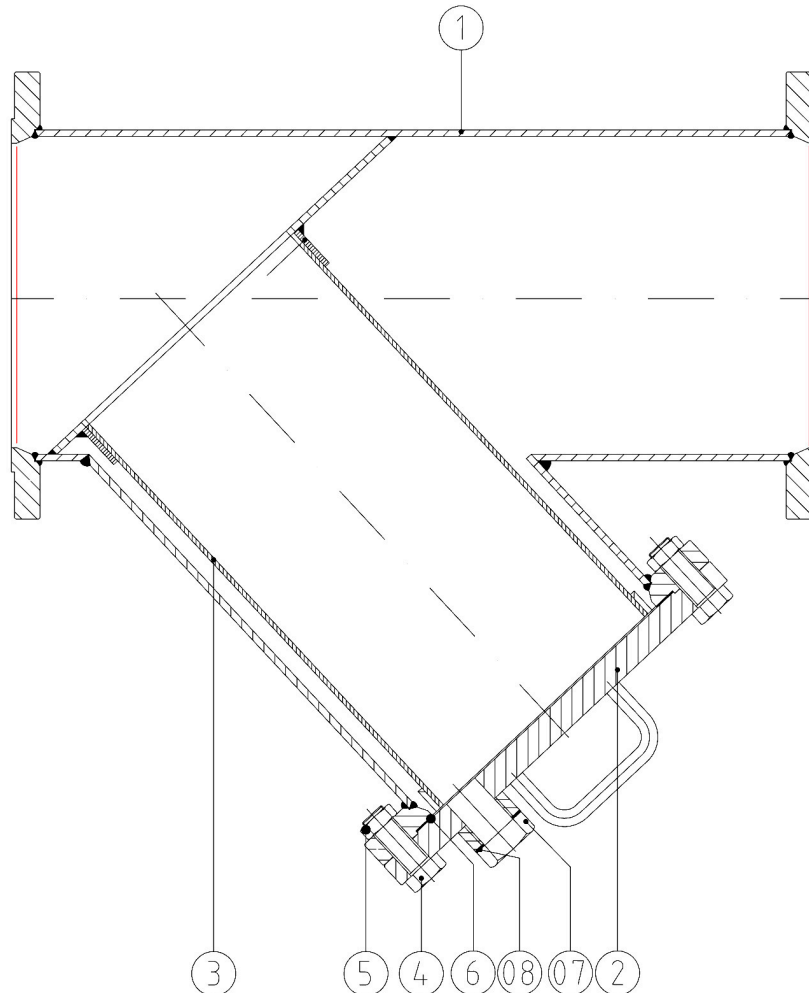
Y-TYPE FABRICATED STRAINERS



**PN 10, PN 16 & PN 20 (Class 150)
DN 250 – 600 (10" - 24")**



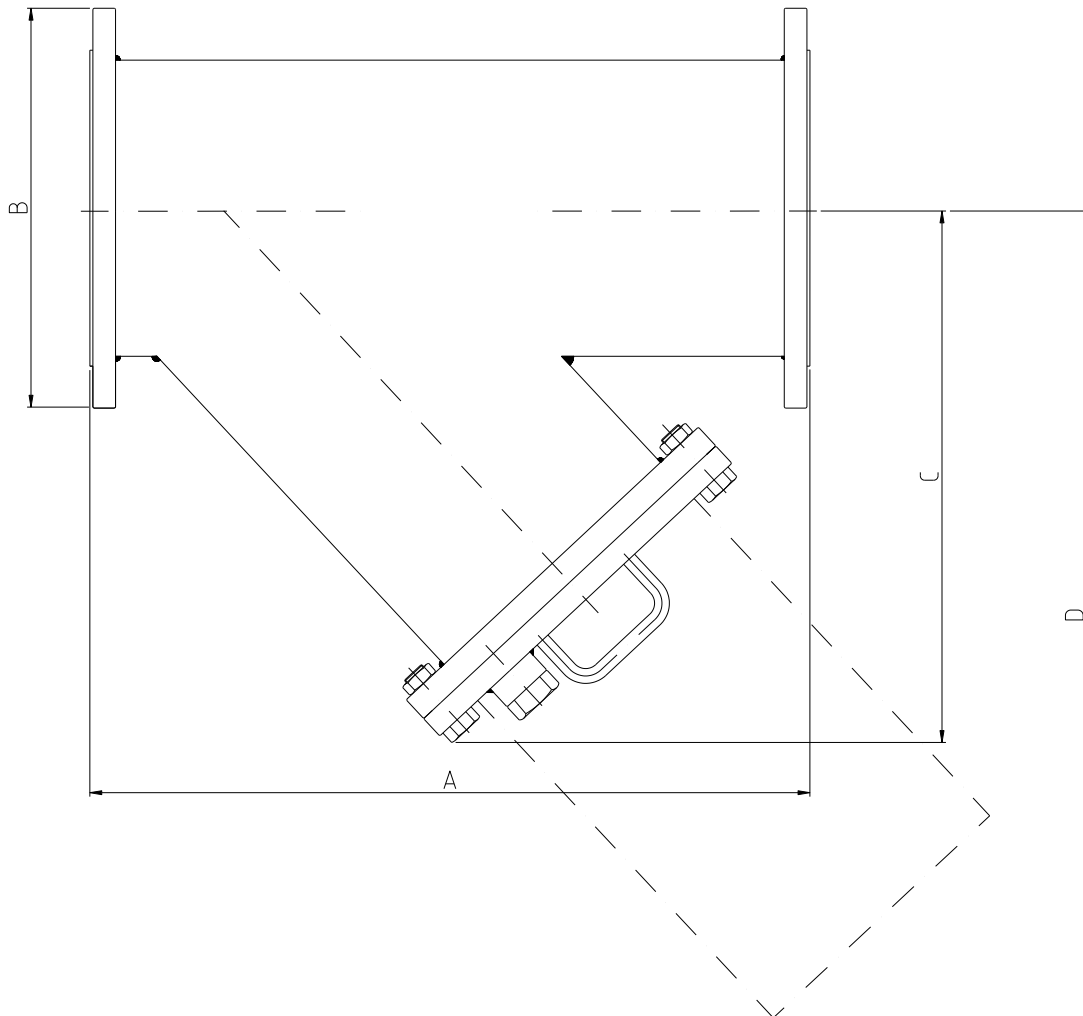
Bolted Cover
Parts and materials



| Item | Description | Carbon Steel |
|------|-------------------|-----------------|
| 1 | Body | A516 Gr70 |
| 2 | Cap | A105 |
| 3 | Strainer screen | AISI 304 |
| 4 | Bolt | 8.8 |
| 5 | Nut | 8 |
| 6 | Cap Gasket | Syntethic Fiber |
| 7 | Drain plug | Carbon Steel |
| 8 | Drain plug gasket | Synthetic fiber |



General Dimensions



| SIZE | A | ØB | | | C | D | Weight | | |
|-----------|------|-------|-------|----------------------|------|------|--------|-------|----------------------|
| | | PN 10 | PN 16 | PN 20 (Class 150) | | | PN 10 | PN 16 | PN 20 (Class 150) |
| 250 (10") | 730 | 395 | 405 | 406.4 | 530 | 920 | 130 | 190 | 192 |
| 300 (12") | 850 | 445 | 460 | 482.5 | 630 | 1020 | 190 | 240 | 243 |
| 350 (14") | 980 | 505 | 520 | 533.4 | 770 | 1200 | 250 | 340 | 342 |
| 400 (16") | 1100 | 565 | 580 | 596.9 | 830 | 1350 | 330 | 400 | 403 |
| 450 (18") | 1200 | 615 | 640 | 635 | 920 | 1500 | 450 | 490 | 492 |
| 500 (20") | 1250 | 670 | 715 | 698.5 | 1000 | 1650 | 520 | 550 | 553 |
| 600 (24") | 1450 | 780 | 840 | 812.8 | 1250 | 1800 | 670 | 700 | 702 |

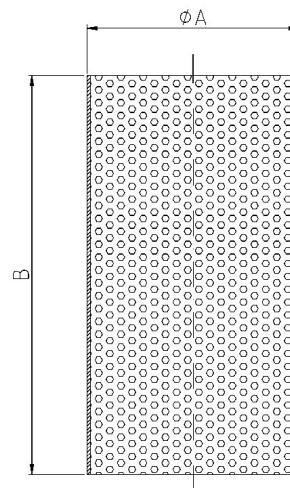
(*) Dimensions in mm and weight in Kg.

General Characteristics

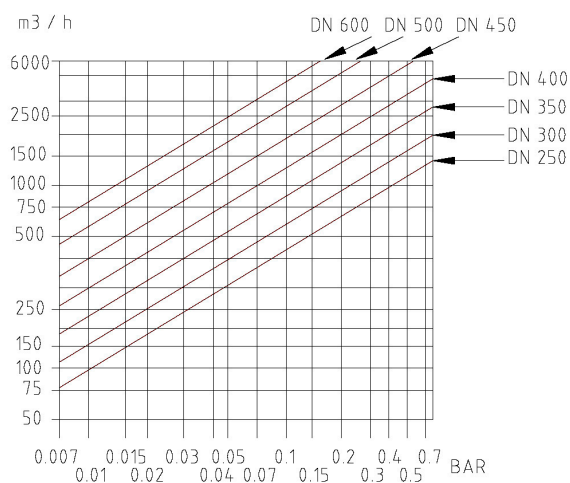
| GENERAL CHARACTERISTICS | Fig. FYS310, FYS316, FYS315 & FYS410, FYS416, FYS415 | |
|-------------------------------|--|--|
| DESIGN STANDARDS | | |
| Strainer design | AD Merkblatt TRD 301 | |
| Face to face Dimensions | EN 558-1 SERIES 1 | |
| Flanged Dimensions | EN 1092-1 & ASME B16.5 Class 150 | |
| Visual Inspection | MSS SP-55 | |
| Marking | EN 19 | |
| TESTS AND CERTIFICATES | | |
| Pressure testing | EN 12266-1 P10 | |

Strainer Screen Dimensions:

| DN | øA | B | Perforation | Area |
|-----|-----|------|-------------|---------|
| 250 | 250 | 475 | ø1,5 | 1: 1,71 |
| 300 | 300 | 585 | ø1,5 | 1: 1,76 |
| 350 | 350 | 695 | ø1,5 | 1: 1,79 |
| 400 | 400 | 805 | ø1,5 | 1: 1,81 |
| 450 | 450 | 855 | ø1,5 | 1: 1,71 |
| 500 | 500 | 895 | ø1,5 | 1: 1,61 |
| 600 | 600 | 1000 | ø1,5 | 1: 1,50 |



Pressure drop:



Pressure / Temperature:

