



**PROINAD92,S.L.**  
ENGINEERING SOLUTIONS

**T-TYPE FABRICATED STRAINERS**

## **FLANGED & BW "T" TYPE STRAINER**

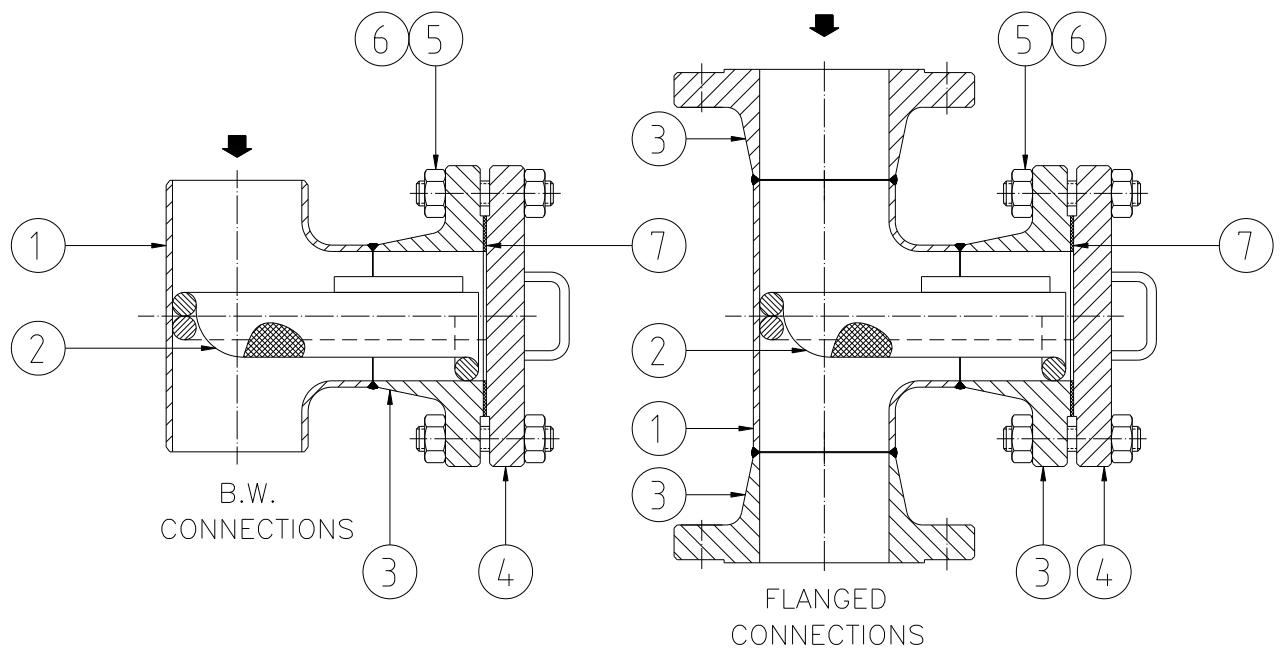


Carbon Steel & Stainless Steel



## FLANGED & BW "T" TYPE STRAINER

### Parts and materials



TEE STRAINER			
Item	Description	Material	
		Carbon Steel	Stainless Steel
1	Body	ASTM A234 WPB	ASTM A 403 WP316
2	Screen	AISI 304	AISI 316
3	W.N. Flange	ASTM A 105	ASTM A 182 F316
4	Blind flange	ASTM A 105	ASTM A 182 F316
5	Stud	ASTM A 193 Gr B7	ASTM A 193 Gr.B8
6	Nut	ASTM A 194 Gr. 2H	ASTM A 194 Gr. 8
7	Gasket	AISI 304 + Graphite	AISI 316 + Graphite

(\*) Other materials under request.



## FLANGED & BW "T" TYPE STRAINER

### Dimensions

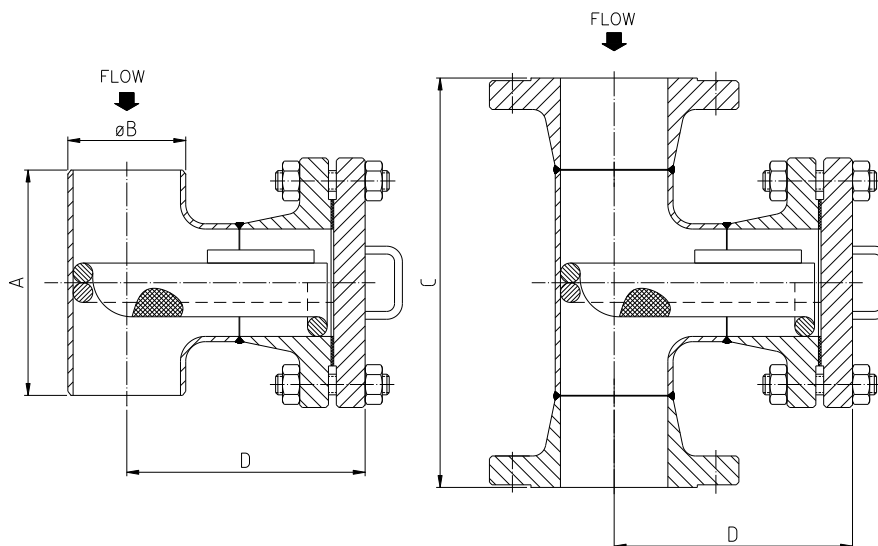


FIG	MATERIAL	PN/CLASS	FIG	MATERIAL	PN/CLASS
TFS310	Carbon Steel	PN10	TFS410	Stainless steel	PN10
TFS316	Carbon Steel	PN16	TFS416	Stainless steel	PN16
TFS325	Carbon Steel	PN25	TFS425	Stainless steel	PN25
TFS340	Carbon Steel	PN40	TFS440	Stainless steel	PN40
TFS315	Carbon Steel	150#	TFS415	Stainless steel	150#
TFS330	Carbon Steel	300#	TFS430	Stainless steel	300#

### General dimensions & Weight

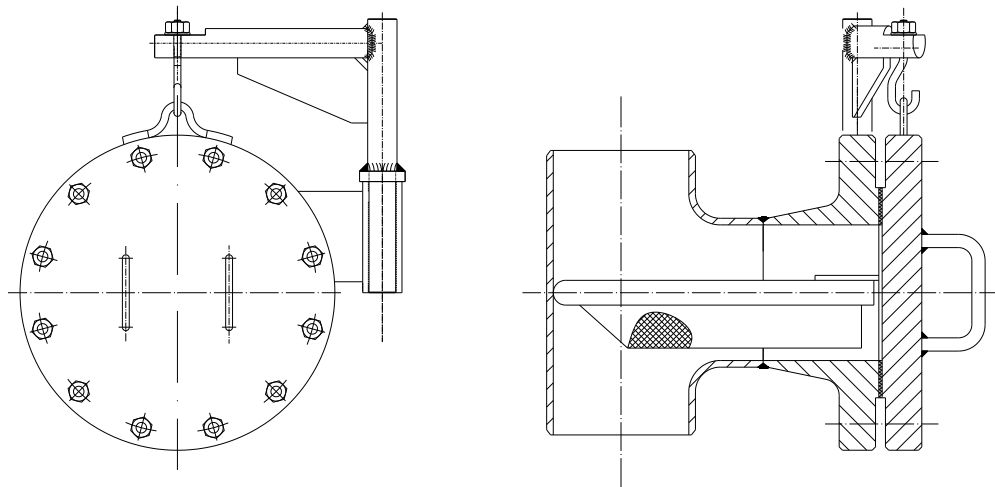
DN		A	ø B	FTS310 FTS410		FTS316 FTS416		FTS325 FTS425		FTS340 FTS440		FTS315 FTS415		FTS330 FTS430	
DIN	ANSI			C	D	C	D	C	D	C	D	C	D	C	D
80	3"	171,4	88,9	273	160	273	186	289	201	289	201	313	186	333	201
100	4"	209,5	114,3	316	181	316	212	342	229	342	229	366	212	384	229
125	5"	247,6	141,3	360	205	360	243	386	264	386	264	428	243	448	264
150	6"	285,7	168,3	398	224	398	263	438	284	438	284	466	263	486	284
200	8"	355,6	219,1	482	268	482	314	518	337	534	337	562	314	582	337
250	10"	431,8	273,1	570	314	574	354	610	388	644	388	638	354	670	388
300	12"	508,0	323,9	646	352	666	407	694	442	740	442	740	407	772	442
350	14"	558,8	355,6	697	377	725	447	761	482	811	482	815	447	847	482
400	16"	609,6	406,4	756	407	782	474	832	514	882	514	866	474	904	514
500	20"	762,0	508,0	914	488	932	575	1014	613	1044	613	1054	575	1088	613
600	24"	863,6	609,6	1030	552	1042	639	1116	677	1166	677	1172	639	1204	677

(\*) Dimensions in mm



## FLANGED & BW "T" TYPE STRAINER

### OPTIONS DAVIT SYSTEM



### General Characteristics

<b>GENERAL CHARACTERISTICS</b>	Fig.FTS310, FTS316, FTS325, FTS340, FTS315, FTS330, FTS410, FTS416, FTS425, FTS440, FTS415 & FTS430		
<b>DESIGN STANDARDS</b>			
Valves design	DIN 3840 - B16,34		
Face to face Dimensions			
Flanged Dimensions	EN 1092 & ASME B16.5		
Visual Inspection	MSS SP- 55		
Marking	EN 19		
<b>TESTS AND CERTIFICATES</b>			
Pressure testing	EN 12266-1 P10		
Pressure-Temperature	ANSI B16,34, EN 1092		